

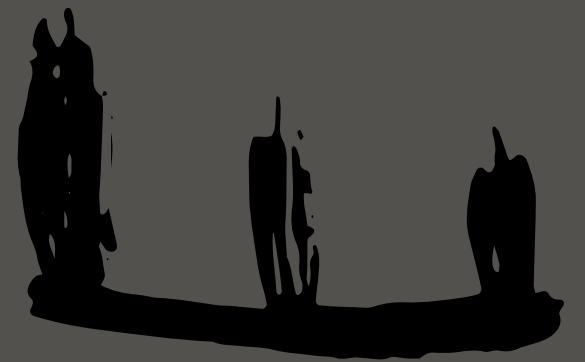
2021

2022

COLLECTION



weißbach



The times we're currently living in are very unusual. And because everything is so unusual, it's important to us to remain as 'normal' as possible.

For us, normal means being able to offer you a contemporary collection of handles, and to deliver your chosen products in perfect quality at the agreed time.

A good dose of friendliness in our dealings with one another rounds it off.

That's the norm for us.

We look forward to presenting our current collection to you in this brochure - and us. What are we capable of?

What makes us tick? What drives us? What can you expect from us?

I'm very much looking forward to having the next normal conversation with you.

Ulf W. Weißbach

Ulf Weißbach founded the company Weißbach Beschlagtechnik in 2005, which he has owner-managed since then.



CONTENTS

08–15

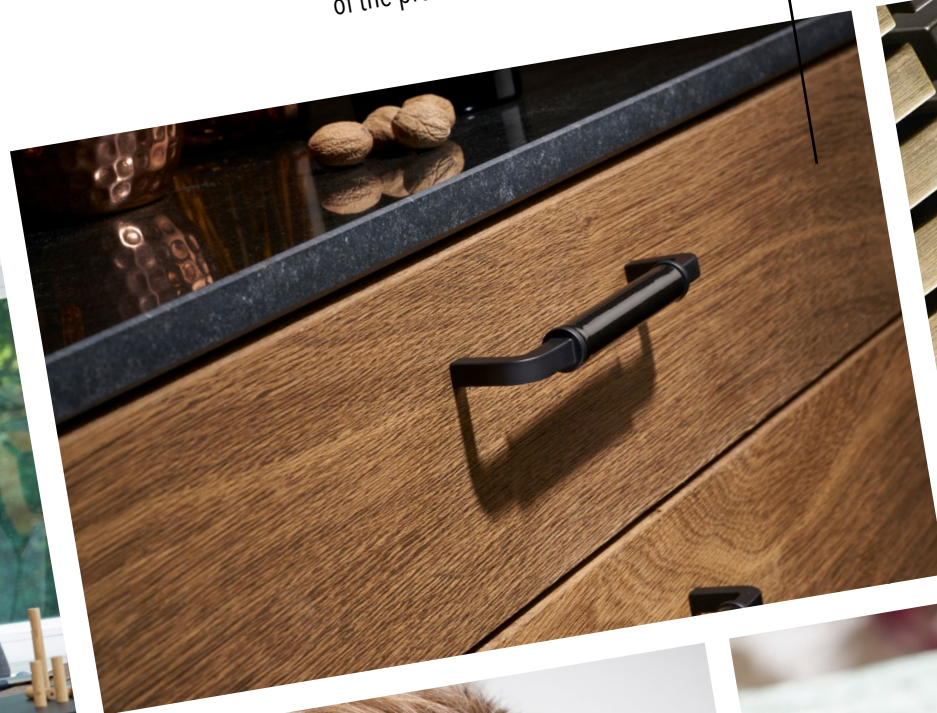
JOINT DEVELOPMENT
Good reasons for starting a
development partnership
with Weißbach.



16–99

COLLECTION

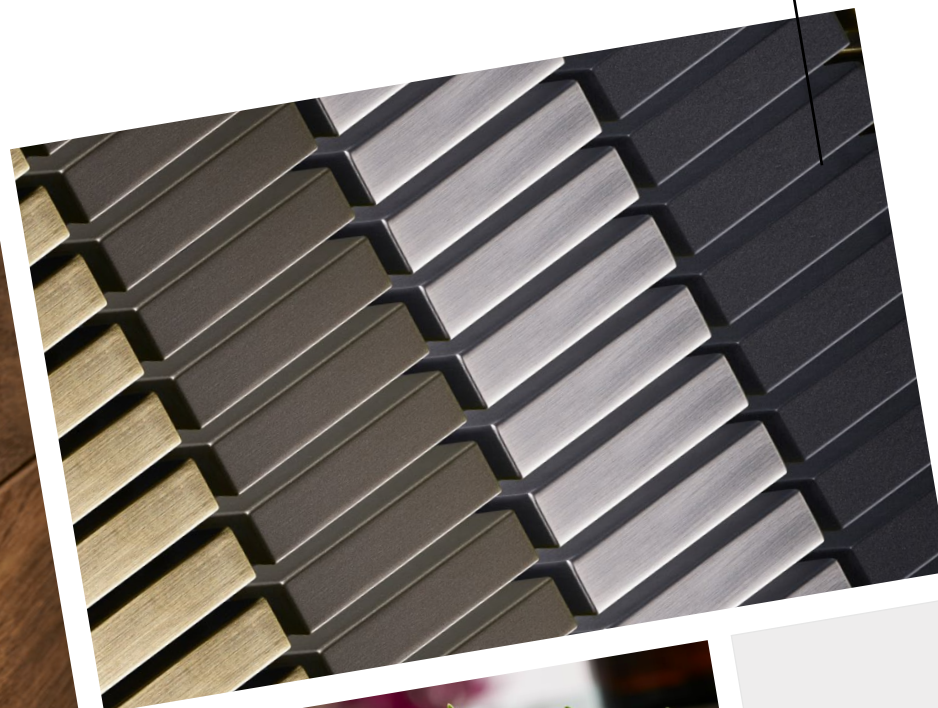
Whether it's a brand-new product or a top seller
handle, button, hook or foot, here you will find all
of the products from the latest collection.



100–105

SURFACES

We have a wide range of production facilities
at our disposal with a great choice of different
surfaces and materials.



106–113

PRODUCT AND PROCESS QUALITY

What do we mean by product and
process quality and how do we ensure it?



114–119

DESIGN

When it comes to design, what is important to
us and what principles underlie all our designs?



120–129

TYPICAL

What drives us? What makes us different?
What can you count on? And what is typical
Weißbach?

JOINT DEVELOPMENT

TRANSFORMING IDEAS INTO REALITY

Do you need a handle with customised features, e.g. with particular dimensions? Or are you keen to pursue your own design idea? Our skilled design and construction team will be happy to work out the details and give you a first draft with your ideas in just a few days.

OUR STANDARDS FOR JOINT DEVELOPMENT PROJECTS

- // We really enjoy working on joint development projects – we don't see them as a bit of a drag, but as a chance to showcase what we can do.
- // We understand your requirements and appreciate your concerns.
- // We listen to you, ask questions, analyse, gain understanding, learn and add some inspiring suggestions of our own to the mix.
- // We always handle confidential information during and beyond the development process with utmost confidentiality.
- // We will get on the job fast and help you to pick up the pace in your development process.
- // We like to play it safe. If there is not 100 percent process reliability in series production, we advise against implementation, even if it means us giving up a seemingly lucrative business.
- // We have a wide range of production facilities at our disposal with a large variety of different surfaces and materials to choose from. We will show you at the outset exactly what we are capable of achieving.

GOOD REASONS FOR A DEVELOPMENT PARTNERSHIP WITH US

Expertise and experience

We have gained an immense wealth of experience and expertise from numerous projects, which we bring to every new project. We make technical suggestions and show cost-effective alternatives where possible. When it comes to checking the technical feasibility of a promising idea, constructive criticism and honesty are always the best policy. It's essential that good design is always reliably produced. Our handle experts go to work on every project with a keen sense for affordable handle design. We calculate fairly to find an economically attractive solution.

Samples and prototypes

To get an initial impression of the proportions, we first of all use our 3D printer to make a quick and simple plastic product sample if requested. After the initial design phase, we analyse every detail and develop a prototype milled from metal, which is finished with the final surface; the tools for series production are built on the basis of the final prototype.

2D and 3D data

In close cooperation with you, we develop detailed construction drawings of the final handles and support your development department with 2D or 3D data.



IDEAS WORKSHOP



In our ideas workshop, we are happy to present all the products in our current collection. This is where you can take your time to examine, feel and compare the handles and combine them with your surface samples. In fact, it's not unheard of for the occasional ingenious product idea to be created here over a hot espresso. Exchanging ideas is just as important to find solutions for small or large issues as well as to constantly fine-tune processes. We look forward to your visit!

COL LEC TION

**SIMPLE GEOMETRY.
SIMPLY STATED.**



G 1569 NEW



29

G 1569 NEW



29

G 1569 NEW



29

G 1583 NEW



31

G 1583 NEW



31

G 1583 NEW



31

G 1550 NEW



32

G 1566 NEW



32

G 1555 NEW



32

G 1550 NEW



33

G 1552 NEW



33

G 1553 NEW



33

G 1568 NEW



35

G 1570 NEW



35

G 1584 NEW



35

G 1554 NEW



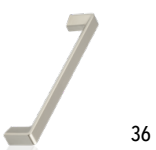
36

G 1557 NEW



36

G 1592 NEW



36

G 1556 NEW



37

G 1560 NEW



37

G 1558 NEW



37

G 1565 NEW



39

G 1565 NEW



39

G 1565 NEW



39

G 1585 NEW



41

G 1582 NEW



41

G 1502



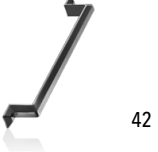
41

G 1547



42

G 1537



42

G 1539



42

G 1579 NEW



43

G 1580 NEW



43

G 1581 NEW



43

G 1578 NEW



45

G 1578 NEW



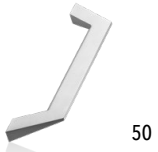
45

G 1592 NEW



45

G 1543



50

G 1536



50

G 1542



50

G 1454



51

G 1403



51

G 1402



51

G 1398



52

G 1381



52

G 1383



52

G 1382



53

G 1401



53

G 1541



53

G 1492



G 1453



G 1475



G 1456



G 1477



G 1538



G 1384



G 1474



G 1523



G 1524



G 1526



G 1518



G 1497



G 1571

NEW



G 1567

NEW



G 1450



G 1514



G 1096



G 1451



G 1513



G 1091



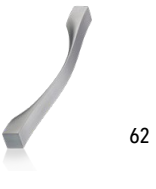
G 1457



G 1488



G 1434



G 1480



G 1522



G 1505



G 1593

NEW



RG 60F



G 1091 SSRM



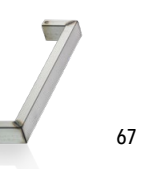
G 1083



G 1511



G 1414 SSR



G 1506



G 1512



G 1414 SS



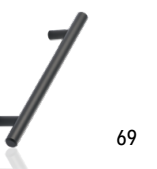
RG 70 VT



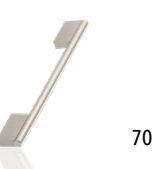
RG 69 VM



RG 03 F



RG 69 VM



RG 70 VT



RG 03 F



RG 10 V



RG 49 V



RG 26 F



G 1501



G 1503



G 1519



G 1083 R2B



73

G 1083 SR2



73

K 3052



73

G 1507



74

G 1431



74

G 1432



74

G 1479



75

G 1365



75

G 1430



75

G 1520



76

G 1521



76

G 1540



76

G 1527



77

G 1489



77

G 1500



77

G 1545



79

G 1546



79

G 1544



79

G 1525



82

G 1424



82

G 1364



83

K 3014



83

K 3048



83

K 3035-28



84

K 3035-25



84

K 3042-15



84

K 3034-25



84

K 3038-20



84

K 3037-15



84

K 3040-30



85

K 3040-25



85

K 3036-30



85

K 3033-15



85

K 3043-20



85

P 0561



88

G 1484



88

K 3023



88

G 1458



89

G 1071



89

P 0628



89

K 3025



92

H 1604



92

K 3026



92

K 3024



92

K 3028



92

G 1482



93

K 3027



93

G 1465



93

G 1374



93

G 1471



93

G 1481



93

K 3054



95

H 2116



95

H 1432



96

H 1214



96

H 1216



97

H 1723



97

F 4007



98

F 4002



99



This handle is inspired by the distinctive classic design language of Bauhaus. The characteristic lines with simple understated geometry have been translated into elegant ergonomic design.



G 1569

L x H x W

169 x 16 x 38 mm

Hole spacing

160, 192, 224, 256, 320 mm

Material surface

Galvanised, coated, anodised

Centre piece in:

Ceramic (drill dimension 160 mm)

Metal (drill dimensions 160, 192, 224, 256, 320 mm)

Wood (drill dimensions 128, 160, 192, 224 mm)



HERITAGE STYLE ANYTHING BUT OLD-FASHIONED

This handcrafted bow handle may be reminiscent of bygone eras, but definitely has a contemporary twist. With its slightly ornate appearance, it has a striking stylish shape compared to most modern minimalist handles. Its gently rounded contours are wonderful to hold and, depending on the material used for the centre piece, it delivers an individual design statement.



G 1583

L x H x W

172 x 44 x 22 mm

Hole spacing

160 mm

Material surface

galvanised, coated

NEW



G 1550

L x H x W
168 x 13 x 31 mm
Hole spacing
160 mm
Material surface
galvanised, coated

NEW



G 1566

L x H x W
168 x 16 x 30 mm
Hole spacing
160 mm
Material surface
galvanised, coated

NEW



G 1555

L x H x W
173 x 15 x 27 mm
Hole spacing
160 mm
Material surface
galvanised, coated

NEW



G 1550

L x H x W
168 x 13 x 31 mm
Hole spacing
160 mm
Material surface
galvanised, coated

NEW



G 1552

L x H x W
173 x 15 x 25 mm
Hole spacing
160 mm
Material surface
galvanised, coated

NEW



G 1553

L x H x W
175 x 17 x 30 mm
Hole spacing
160 mm
Material surface
galvanised, coated

The slender, square-edged handle has a distinct technical character and embodies industrial practicality. The handle's central guide extends into the base section to form its own flat end piece. The angular graduation frames the handle to fit seamlessly on the front of the furniture.

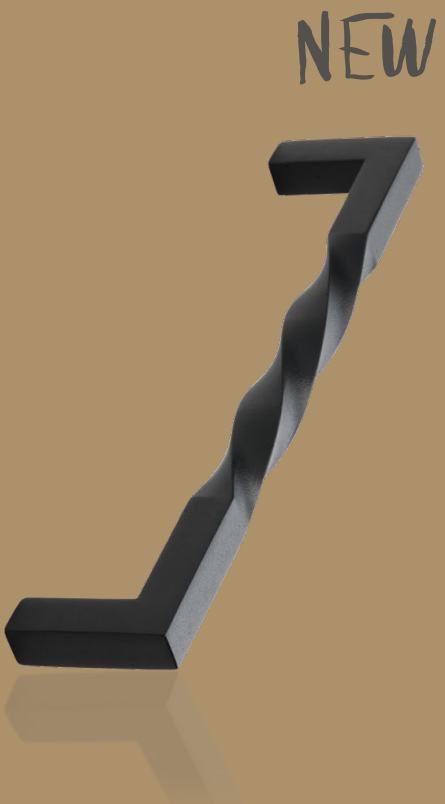


G 1568

L x H x W
182 x 13 x 30 mm

Hole spacing
160 mm

Material surface
galvanised, coated



G 1570

L x H x W
170 x 10 x 35 mm

Hole spacing
160 mm

Material surface
galvanised, coated



G 1584

L x H x W
186 x 37 x 8 mm

Hole spacing
160 mm

Material surface
galvanised, coated

NEW



G 1554

L x H x W
181 x 19 x 30 mm
Hole spacing
160 mm
Material surface
galvanised, coated

NEW



G 1557

L x H x W
188 x 22 x 29 mm
Hole spacing
160 mm
Material surface
galvanised, coated

NEW



G 1592

L x H x W
175 x 14 x 30 mm
Hole spacing
160 mm
Material surface
galvanised, coated

NEW



G 1556

L x H x W
167 x 20 x 36 mm
Hole spacing
160 mm
Material surface
galvanised, coated

NEW



G 1560

L x H x W
200 x 33 x 31 mm
Hole spacing
192 mm
Material surface
galvanised, coated

NEW

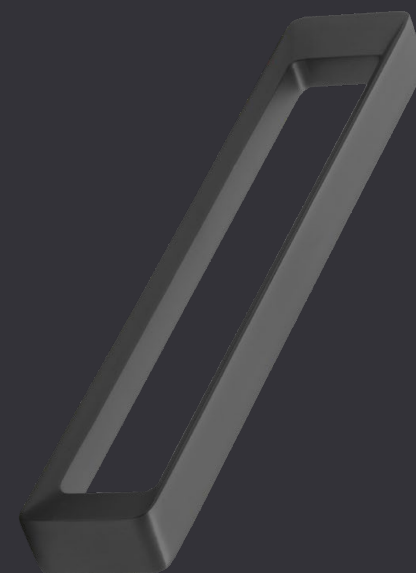


G 1558

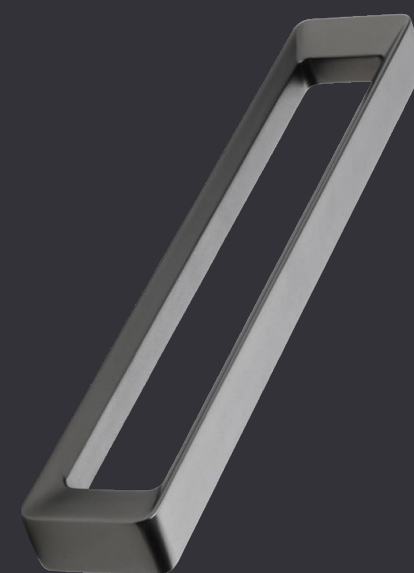
L x H x W
167 x 33 x 31 mm
Hole spacing
160 mm
Material surface
galvanised, coated



NEW



NEW



NEW

**G 1565****L x H x W**

174 x 14 x 30 mm

Hole spacing

160 mm

Material surface

galvanised, coated

The wide, linear handle with flat underframe resembles a straight picture frame. Its corners are defined by downward, slightly rounded bevelling, lending it a subtle elegance while retaining its strong lines.



Inspired by Japanese design, the curved grip surface and simple geometry of this furniture handle add to its appeal.



G 1585

L x H x W
175 x 36 x 15 mm
Hole spacing
160 mm
Material surface
galvanised, coated

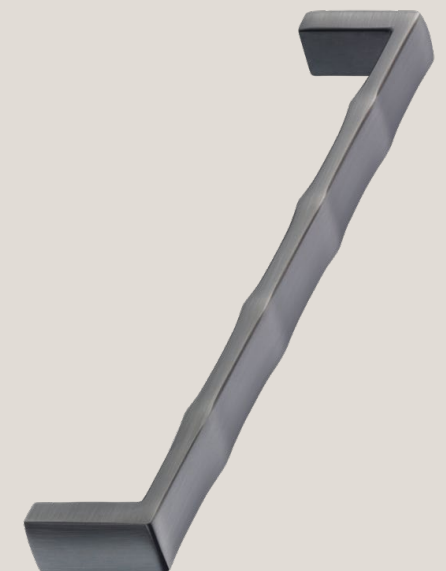
NEW



G 1582

L x H x W
168 x 28 x 16 mm
Hole spacing
160 mm
Material surface
galvanised, coated

NEW



G 1502

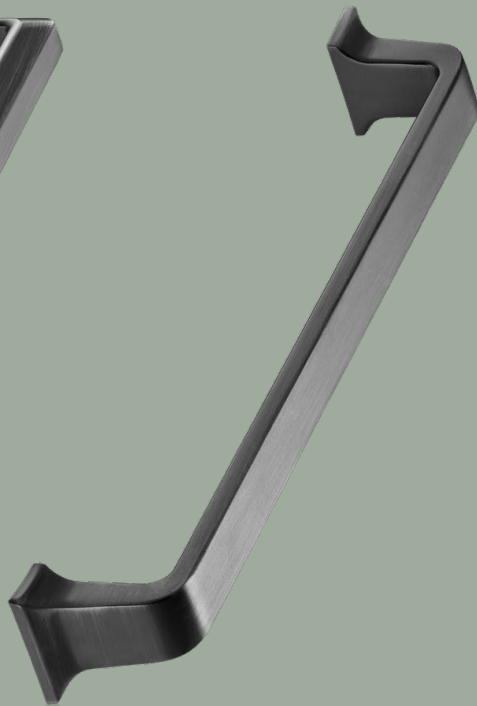
L x H x W
169 x 13 x 26 mm
Hole spacing
160 mm
Material surface
galvanised, coated



G 1547
L x H x W
170 x 32 x 38 mm
Hole spacing
160 mm
Material surface
galvanised, coated

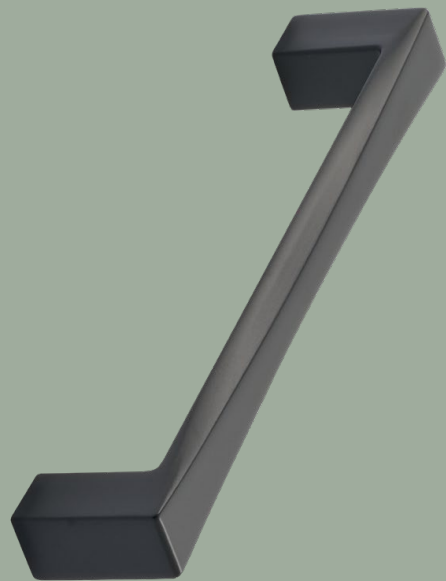


G 1537
L x H x W
186 x 14 x 27 mm
Hole spacing
160 mm
Material surface
galvanised, coated



G 1539
L x H x W
175 x 23 x 26 mm
Hole spacing
160 mm
Material surface
galvanised, coated

NEW



G 1579
L x H x W
135 x 25 x 12 mm
Hole spacing
128 mm
Material surface
galvanised, coated

NEW



G 1580
L x H x W
134 x 25 x 14 mm
Hole spacing
128 mm
Material surface
galvanised, coated

NEW



G 1581
L x H x W
135 x 30 x 10 mm
Hole spacing
128 mm
Material surface
galvanised, coated

DESIGN WITH EDGE

The appeal of the G 1578 handle is its simplicity and clean lines. The aim during development was to marry defined edges with a pleasing tactile feel. The end result: a graceful handle that is smooth and pleasant to the touch.



G 1578

L x H x W

176 x 30 x 9 mm

Hole spacing

160 mm

Material surface

galvanised, coated

G 1592

L x H x W

175 x 14 x 30 mm

Hole spacing

160 mm

Material surface

galvanised, coated

FLUID SHAPES MEET DEFINED EDGES

The current interior trend for curves is very much in evidence. And there are a lot around—armchairs, sofas, tables, almost all new furniture pieces feature elegant curves. Soft and understated, for smooth fluid shapes. The clean minimalist lines join with organic shapes to create a softer appealing design.



SIX TIMES FOUR OF INFINITE OPTIONS

The G 1536 handle is overtly restrained, feels comfortable to hold and is available in six lengths. On this page, you can see four of the possible finishes; all others can be found on pages 100 and 101.

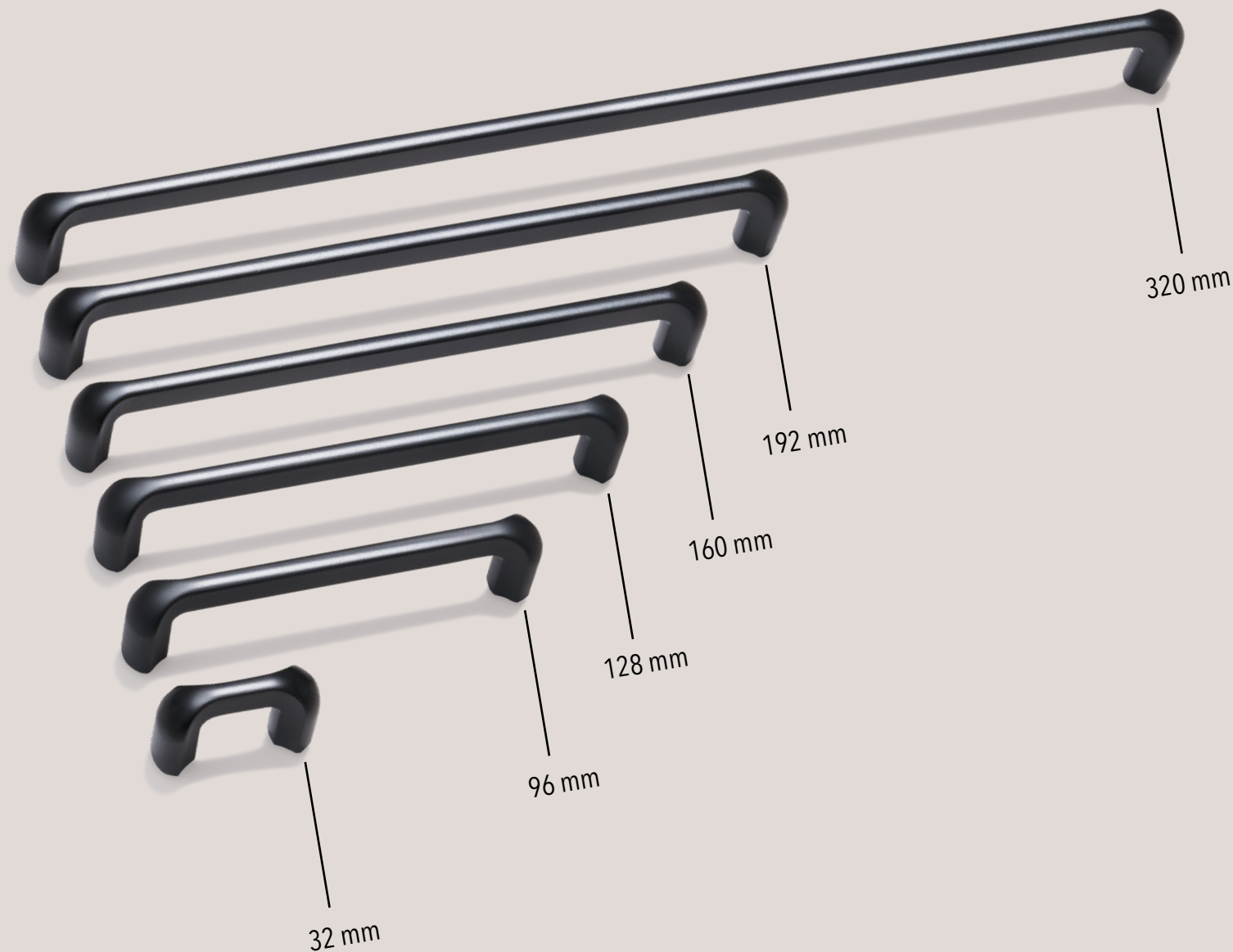


G13 matt stainless-steel look

G26 titanium coloured (gunmetal)

G14 brushed black nickel

G14 brushed black nickel

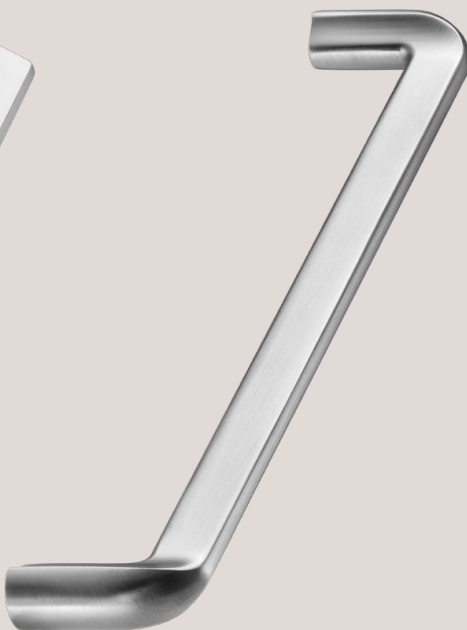


TOPSELLERS



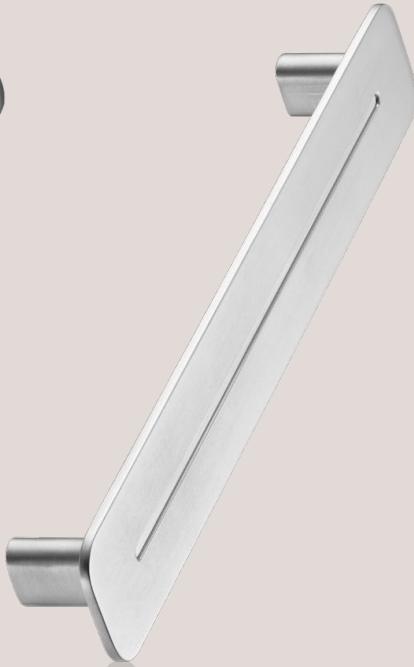
G 1543

L x H x W
178 x 11 x 40 mm
Hole spacing
160 mm
Material surface
galvanised, coated



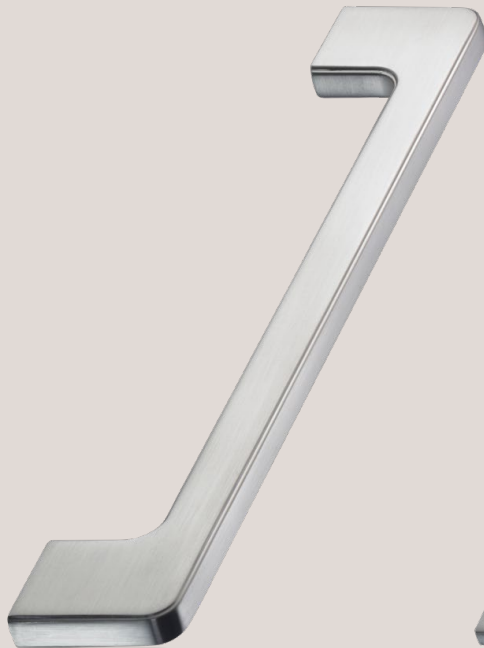
G 1536

L x H x W
168 x 13 x 31 mm
Hole spacing
32, 96, 128, 160, 192, 320 cm
Material surface
galvanised, coated



G 1542

L x H x W
188 x 30 x 25 mm
Hole spacing
160 mm
Material surface
galvanised, coated



G 1454

L x H x W
200 x 7,5 x 30 mm
328 x 7,5 x 30 mm
Hole spacing
160 mm + 192 mm
288 mm + 320 mm
Material surface
galvanised, coated



G 1403

L x H x W
195 x 8 x 30 mm
355 x 8 x 30 mm
Hole spacing
160 mm
320 mm
Material surface
galvanised, coated



G 1402

L x H x W
193 x 10 x 32 mm
365 x 10 x 30 mm
Hole spacing
160 mm
320 mm
Material surface
galvanised, coated

Good to know

Our product range is divided into different price categories. One of the product range modules is aimed at what we call introductory pricing. These handles are very competitively priced!
At the same time, our suppliers' production capacities are such that we can also offer smaller quantities of 1000 pieces upwards at surprisingly low prices.



G 1398

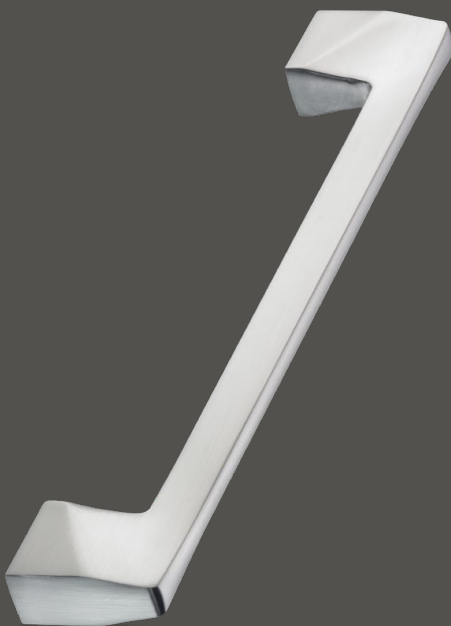
L x H x W
192 x 9 x 32 mm
352 x 9 x 32 mm
Hole spacing
160 mm
320 mm
Material surface
galvanised, coated

G 1381

L x H x W
183 x 9 x 32 mm
343 x 9 x 32 mm
Hole spacing
160 mm
320 mm
Material surface
galvanised, coated

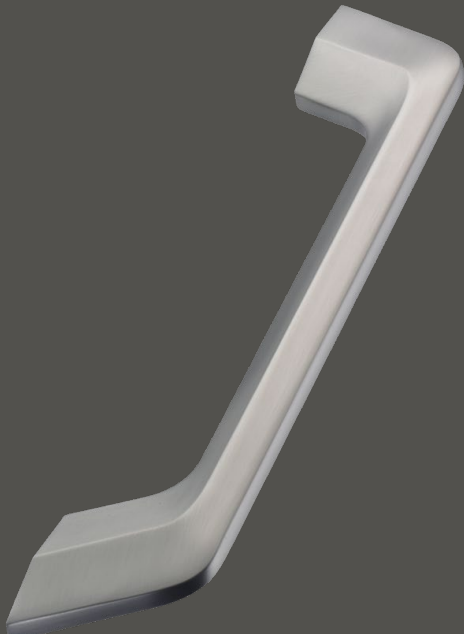
G 1383

L x H x W
192 x 10 x 30 mm
352 x 10 x 30 mm
Hole spacing
160 mm
320 mm
Material surface
galvanised, coated



G 1382

L x H x W
166 x 14 x 31 mm
197 x 14 x 31 mm
Hole spacing
128 mm
160 mm
Material surface
galvanised, coated



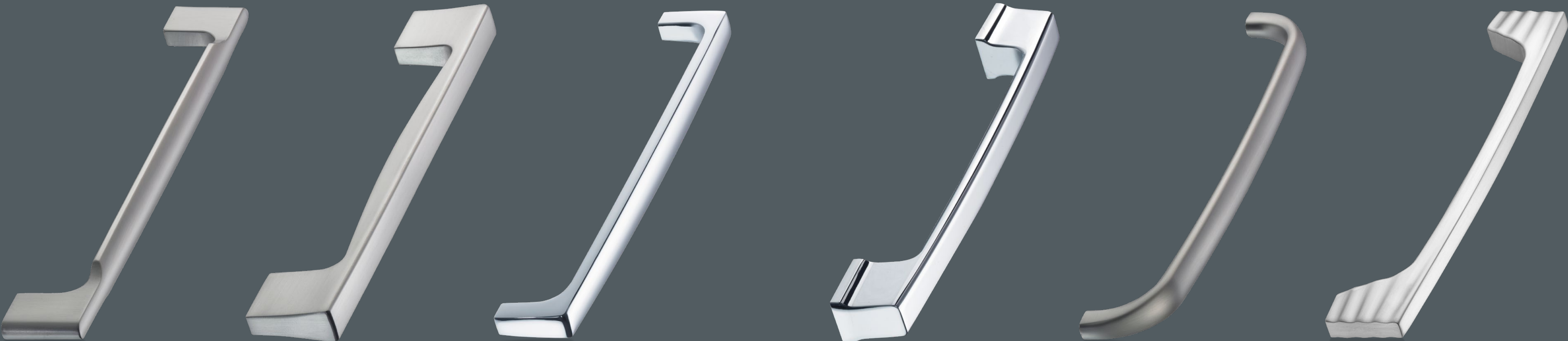
G 1401

L x H x W
194 x 9 x 32 mm
Hole spacing
160 mm
Material surface
galvanised, coated



G 1541

L x H x W
172 x 7 x 38 mm
Hole spacing
160 mm
Material surface
galvanised, coated



G 1492 L x H x W 188 x 16 x 28 mm Hole spacing 160 mm Material surface galvanised, coated	G 1453 L x H x W 230 x 13 x 29 mm Hole spacing 160 mm Material surface galvanised, coated	G 1475 L x H x W 168 x 7,5 x 26,6 mm 328 x 7,5 x 26,6 mm Hole spacing 160 mm 320 mm Material surface galvanised, coated	G 1456 L x H x W 178 x 15 x 25 mm 180 x 15 x 25 mm Hole spacing 160 mm Material surface galvanised, coated	G 1477 L x H x W 170,5 x 7,5 x 28 mm 330 x 7,5 x 28 mm Hole spacing 160 mm 320 mm Material surface galvanised, coated	G 1538 L x H x W 168 x 11 x 27 mm Hole spacing 160 mm Material surface galvanised, coated
--	--	--	--	--	--



G 1384

L x H x W
202 x 10 x 30 mm
363 x 10 x 30 mm
Hole spacing
160 mm
320 mm
Material surface
galvanised, coated

G 1474

L x H x W
192 x 12,9 x 27,5 mm
352 x 12,9 x 27,5 mm
Hole spacing
160 mm
320 mm
Material surface
galvanised, coated



G 1523

L x H x W
216 x 11x 28 mm
Hole spacing
192 mm
Material surface
galvanised, coated

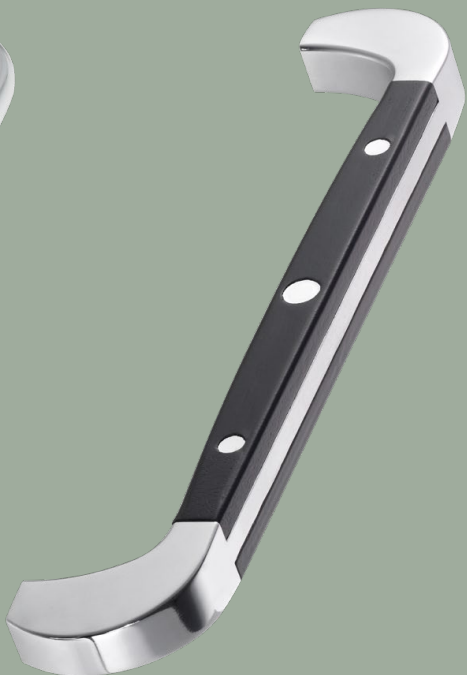


G 1524

L x H x W
192 x 10 x 30 mm
210 x 8 x 34 mm
Hole spacing
192 mm
Material surface
galvanised, coated

G 1526

L x H x W
178 x 13 x 32 mm
Hole spacing
160 mm
Material surface
galvanised, coated



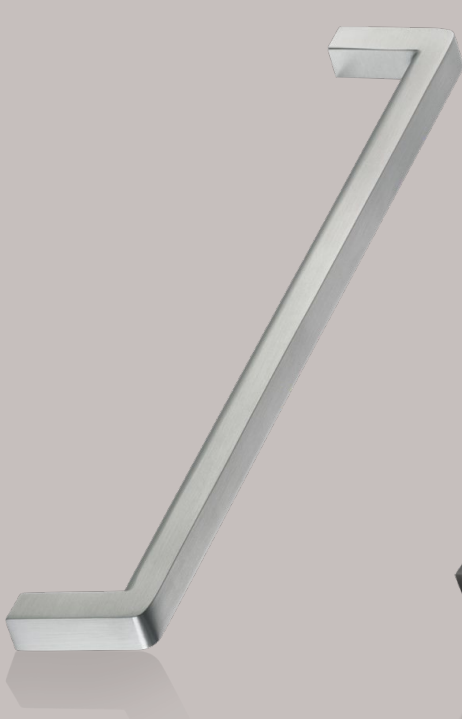
G 1518

L x H x W
178 x 15 x 32 mm
Hole spacing
160 mm
Material surface
galvanised, coated

The G 1497 handle doesn't need any fancy embellishments. It's characterised by clean lines, precise edges and rounded corners.



TOP SELLERS



G 1497

L x H x W
169 x 9 x 28 mm
201 x 9 x 28 mm
329 x 9 x 28 mm

Hole spacing
160 mm
192 mm
320 mm

Material surface
galvanised, coated

NEW



G 1571

L x H x W
168 x 18 x 28 mm

Hole spacing
160 mm

Material surface
galvanised, coated

NEW



G 1567

L x H x W
174 x 17 x 29 mm

Hole spacing
160 mm

Material surface
galvanised, coated

4 mm glass overlay that
can be coated to match
the front colour.



G 1450

L x H x W

168 x 35 x 28 mm
328 x 35 x 28 mm

Hole spacing

160 mm
320 mm

Material surface

galvanised, coated



G 1514

L x H x W

168 x 35 x 33 mm
328 x 35 x 38 mm

Hole spacing

160 mm
320 mm

Material surface

galvanised, coated



G 1096

L x H x W

135 x 28 x 27 mm
167 x 28 x 32 mm

Hole spacing

128 mm
160 mm

Material surface

galvanised, coated



G 1451

L x H x W

200 x 25 x 28 mm

Hole spacing

192 mm

Material surface

galvanised, coated



G 1513

L x H x W

170 x 21 x 38 mm

Hole spacing

160 mm

Material surface

galvanised, coated



G 1091

L x H x W

138 x 10 x 30 mm
170 x 10 x 30 mm
202 x 10 x 30 mm

Hole spacing

128 mm
160 mm
192 mmt

Material surface

galvanised, coated



G 1457
L x H x W
234 x 23 x 36 mm
Hole spacing
160 mm
Material surface
galvanised, coated



G 1488
L x H x W
204 x 17 x 27 mm
Hole spacing
192 mm
Material surface
galvanised, coated



G 1434
L x H x W
207 x 26 x 18 mm
Hole spacing
160 mm
Material surface
galvanised, coated



G 1480
L x H x W
202 x 13,6 x 32 mm
Hole spacing
160 mm
Material surface
galvanised, coated



G 1522
L x H x W
(X) x 22 x 39 mm
Hole spacing
customisable
Material surface
galvanised, coated



G 1083
L x H x W
(customisable) x 17 x 35 mm
Hole spacing
customisable
Material surface
galvanised, coated

TOP SELLERS

NEW

**G 1506****L x H x W**

(Hs+20) x 21 x 41 mm

Hole spacing

customisable

Material surface

galvanised, coated

**G 1505****L x H x W**

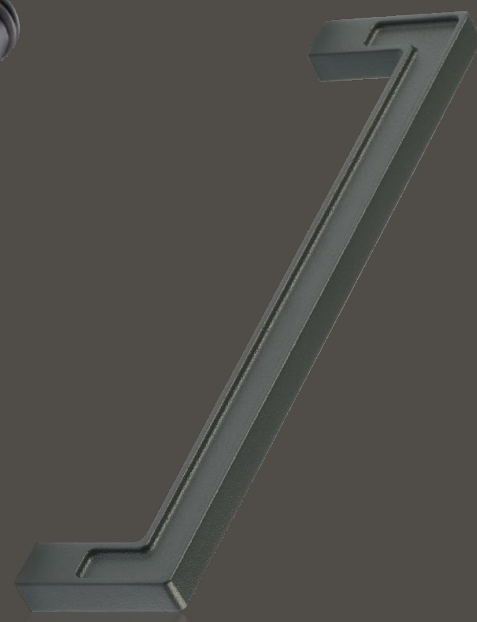
(Hs+30) x 20 x 39 mm

Hole spacing

customisable

Material surface

galvanised, coated

**G 1593****L x H x W**

172 x 8 x 36 mm

Hole spacing

160 mm

Material surface

coated

THE INDUSTRIAL LOOK – RUSTIC CHARM FOR A COSY HOME

A compelling duo for a strong impact—industrial metal combined with warm, homely wood. Solid kitchen islands made of aged wood and concrete worktops combine the roughness of the materials to complement the modern rustic flair perfectly. Workshop character makes its way into the home adding a touch of craftsmanship to the furniture. Instead of plain and undefined, the design is striking and prominent. Industrial doesn't claim to be perfect. And that's the very beauty of this style.





G 1511

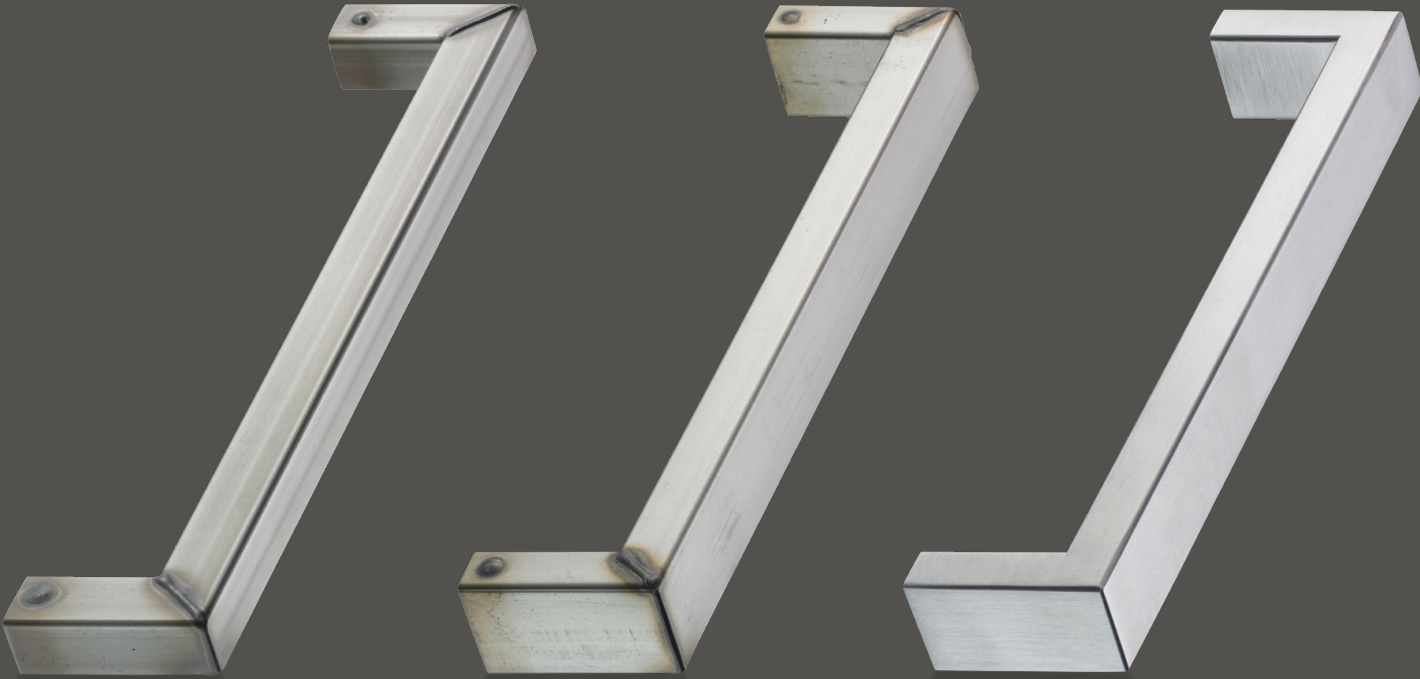
L x H x W
(Hs +15) x 29 x 34 mm
Hole spacing
customisable
Material surface
anodised, galvanised, coated, wood

G 1512

L x H x W
(Hs+16) x 27 x 42 mm
Hole spacing
customisable
Material surface
anodised, galvanised, coated, wood

RG 60 F

L x H x W
(Hs+21) x 22 x 45 mm
Hole spacing
customisable
Material surface
anodised, galvanised, coated, wood



G 1091 (SSRM)

L x H x W
customisable
Hole spacing
customisable
Material surface
raw stainless steel, clear matt coating

G 1414 (SSR)

L x H x W
customisable
Hole spacing
customisable
Material surface
raw stainless steel, clear coating

G 1414 (SS)

L x H x W
customisable
Hole spacing
customisable
Material surface
brushed stainless steel

WE'RE BACKING BLACK!

The dark tone has become an integral part of interior design and, when properly combined, looks anything but drab and gloomy. Natural wood tones, for instance, go beautifully with black. They bestow their naturalness on the dark tone, creating a real source of warmth and conjuring up a touch of Scandi flair in the home. After all, Scandinavians have been combining black and white with natural woods almost exclusively for years.



RG 70 VT

L x H x W
(Hs + 10) x 14 x 35 mm
Hole spacing
customisable
Material surface
galvanised, coated
optional
stainless steel, knurled



RG 69 VM

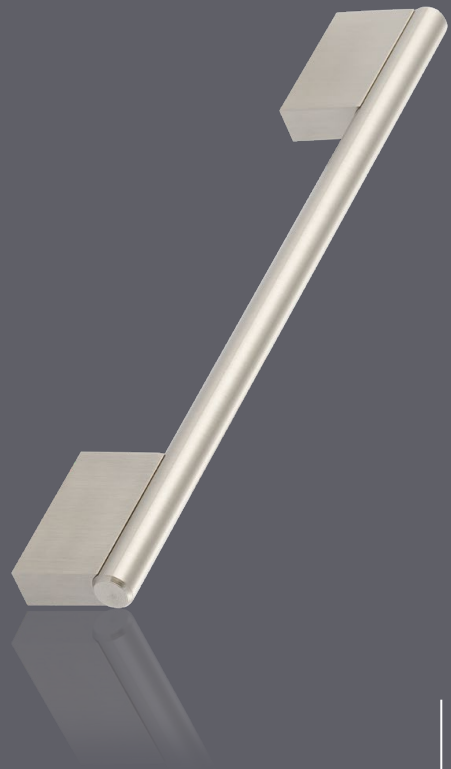
L x H x W
(Hs + 23) x 10 x 30 mm
Hole spacing
customisable
Material surface
galvanised, coated
optional
stainless steel, knurled



RG 03 F

L x H x W
(Hs + 60) x 12 x 35 mm
Hole spacing
customisable
Material surface
galvanised, coated
optional
stainless steel, knurled

ROD HANDLES. BUT DEFINITELY NOT OFF-THE-SHELF



RG 69 VM

L x H x W

(BA+23) x 10 x 30 mm

Hole spacing

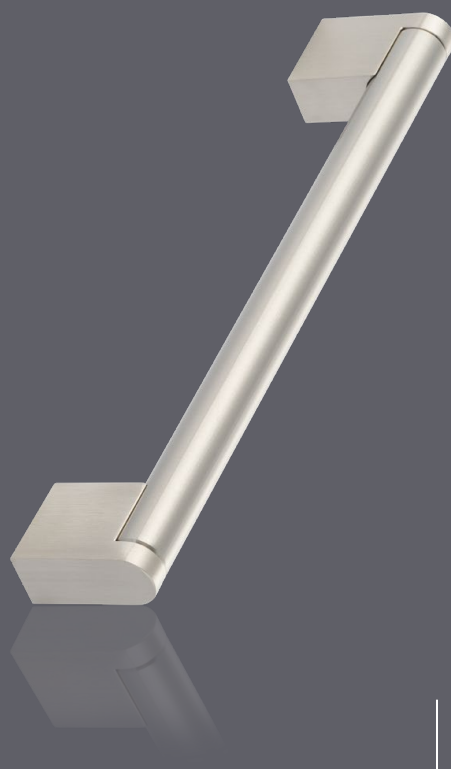
customisable

Material surface

galvanised, coated

optional

stainless steel, knurled



RG 70 VT

L x H x W

(BA+10) x 14 x 35 mm

Hole spacing

customisable

Material surface

galvanised, coated

optional

stainless steel, knurled



RG 03 F

L x H x W

(BA+60) x 12 x 35 mm

Hole spacing

customisable

Material surface

galvanised, coated

optional

stainless steel, knurled



RG 10 V

L x H x W

(BA+30) x 10 x 38 mm

Hole spacing

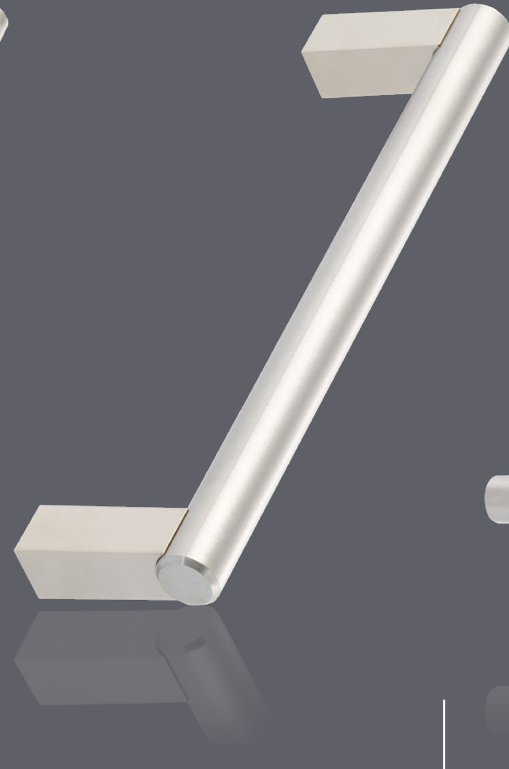
customisable

Material surface

galvanised, coated

optional

stainless steel, knurled



RG 49 V

L x H x W

(BA+17) x 14 x 45 mm

Hole spacing

customisable

Material surface

galvanised, coated

optional

stainless steel, knurled



RG 26 F

L x H x W

(BA+60) x 14 x 35 mm

Hole spacing

customisable

Material surface

galvanised, coated

optional

stainless steel, knurled

**G 1501****L x H x W**

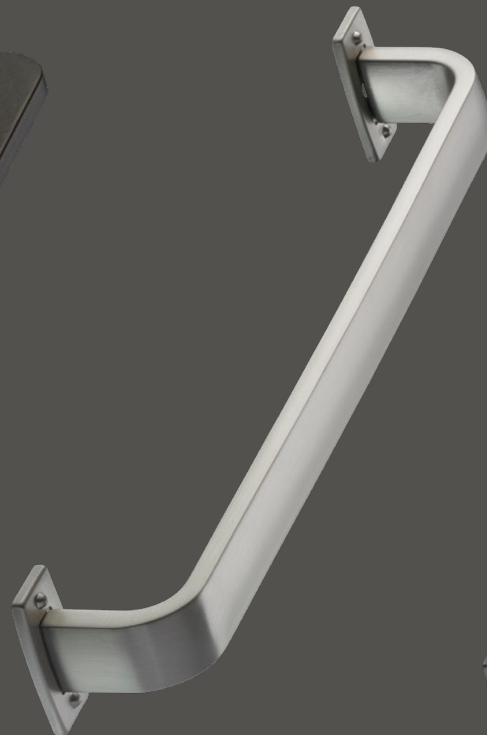
172 x 20 x 30 mm

Hole spacing

160 mm

Material surface

galvanised, coated

**G 1503****L x H x W**

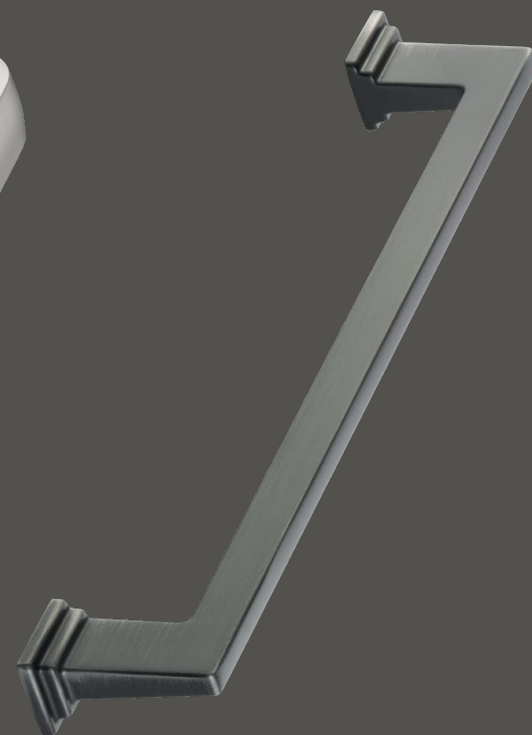
179 x 26 x 28 mm

Hole spacing

160 mm

Material surface

galvanised, coated

**G 1519****L x H x W**

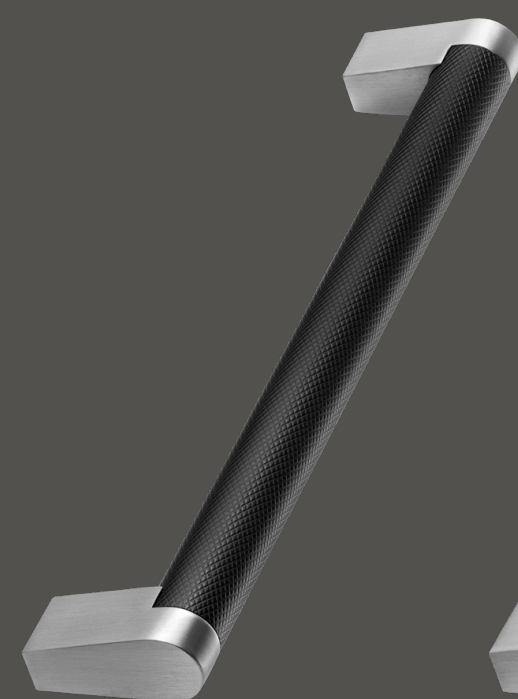
176 x 15 x 30 mm

Hole spacing

160 mm

Material surface

galvanised, coated

**G 1083 R2B****L x H x W**

(customisable) x 17 x 35 mm

Hole spacing

customisable

Material surface

knurled, galvanised, coated

**G 1083 SR2****L x H x W**

(customisable) x 17 x 35 mm

Hole spacing

customisable

Material surface

knurled, galvanised, coated

**K 3052****H x B**

28 x 38 mm

Hole spacing

-

Material surface

knurled

TOP SELLERS



G 1507

L x H x W
201 x 22 x 27 mm
Hole spacing
160 mm
Material surface
galvanised, coated

G 1431

L x H x W
212 x 26 x 27 mm
Hole spacing
160 mm
Material surface
galvanised, coated

G 1432

L x H x W
212 x 27 x 26 mm
Hole spacing
160 mm
Material surface
galvanised, coated

G 1479

L x H x W
(Ba + 9) x 24 x 33 mm
Hole spacing
customisable
Material surface
galvanised, coated

G 1365

L x H x W
142 x 22 x 24 mm
Hole spacing
96 mm
Material surface
galvanised, coated

G 1430

L x H x W
186 x 16 x 29 mm
Hole spacing
160 mm
Material surface
galvanised, coated



G 1520

L x H x W
168 x 12 x 28 mm
Hole spacing
160 mm
Material surface
galvanised, coated



G 1521

L x H x W
177 x 16 x 28 mm
Hole spacing
160 mm
Material surface
galvanised, coated



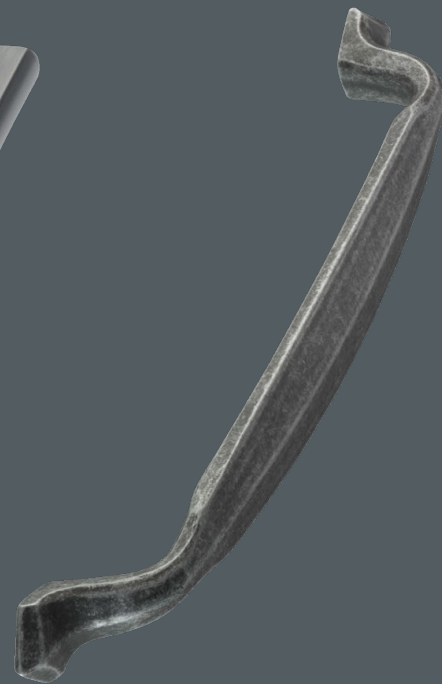
G 1540

L x H x W
188 x 10 x 38 mm
Hole spacing
160 mm
Material surface
galvanised, coated



G 1527

L x H x W
184 x 9 x 30 mm
Hole spacing
160 mm
Material surface
galvanised, coated



G 1489

L x H x W
194 x 19 x 27 mm
Hole spacing
160 mm
Material surface
galvanised, coated

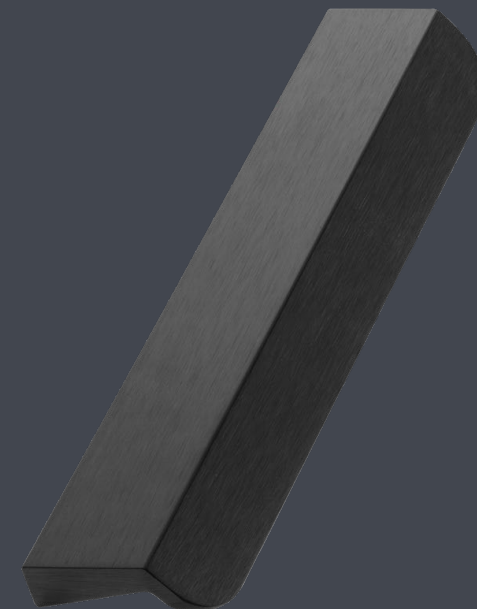


G 1500

L x H x W
192 x 13 x 25 mm
Hole spacing
160 mm
Material surface
galvanised, coated



The G 1545 handle is easy to grip and leaves plenty of room for your fingers when opening and closing drawers.



G 1545

L x H x W

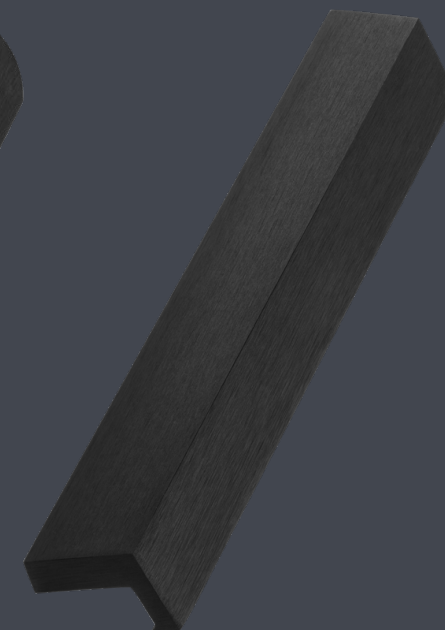
(customisable) x 17 x 33 mm

Hole spacing

customisable

Material surface

anodised, galvanised, coated



G 1546

L x H x W

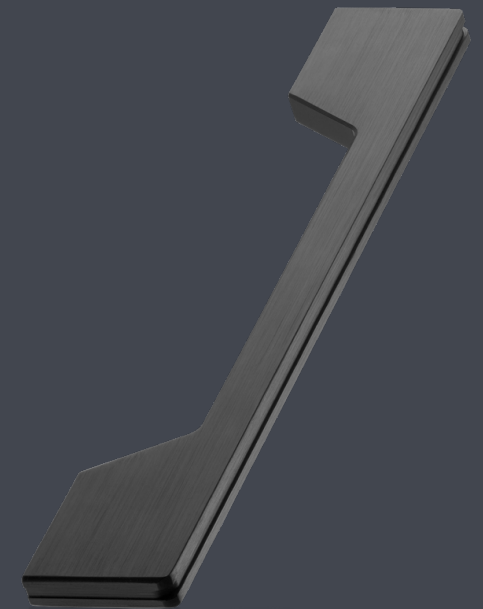
(customisable) x 20 x 23 mm

Hole spacing

customisable

Material surface

anodised, galvanised, coated



G 1544

L x H x W

(customisable) x 8 x 30 mm

Hole spacing

customisable

Material surface

anodised, galvanised, coated

ALUMINIUM HANDLE STRIPS

The profiles are custom-made. So, you are free to define the profile cross-section, dimensions and surfaces. We offer profiles to be screwed in from behind or recessed with a harpoon-style bar.





G 1525

L x H x W
200 x 30 x 26 mm
Hole spacing
128 mm
Material surface
galvanised, coated



G 1424

L x H x W
194 x 38 x 27 mm
Hole spacing
96 mm
Material surface
galvanised, coated



G 1364

L x H x W
100 x 36 x 24 mm
Hole spacing
64 mm
Material surface
galvanised, coated



K 3014

L x H x W
59 x 38 x 35 mm
Material surface
galvanised, coated

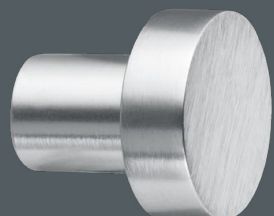


K 3048

H x B
20 x 27 mm
Material surface
galvanised, coated



K 3035-28-SS
H x B
28 x 30 mm
Material surface
brushed stainless steel



K 3035-25-SS
H x B
24 x 25 mm
Material surface
brushed stainless steel



K 3042-15-23-SS
H x B
23 x 15 mm
Material surface
brushed stainless steel



K 3040-30-33-SS
H x B
33 x 30 mm
Material surface
brushed stainless steel



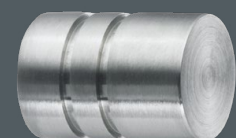
K 3040-25-28-SS
H x B
28 x 25 mm
Material surface
brushed stainless steel



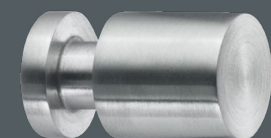
K 3036-30-26-SS
H x B
30 x 26 mm
Material surface
brushed stainless steel



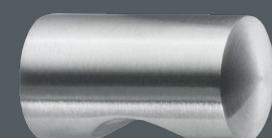
K 3034-25-27-SS
H x B
27 x 25 mm
Material surface
brushed stainless steel



K 3038-15-20-SS
H x B
20 x 15 mm
Material surface
brushed stainless steel



K 3037-15-24-SS
H x B
24 x 15 mm
Material surface
brushed stainless steel



K 3033-15-26-SS
H x B
26 x 15 mm
Material surface
brushed stainless steel



K 3043-20-23-SS
H x B
23 x 20 mm
Material surface
brushed stainless steel

**OUR HANDLES COST
LESS THAN YOU THINK.
TRUST US.**

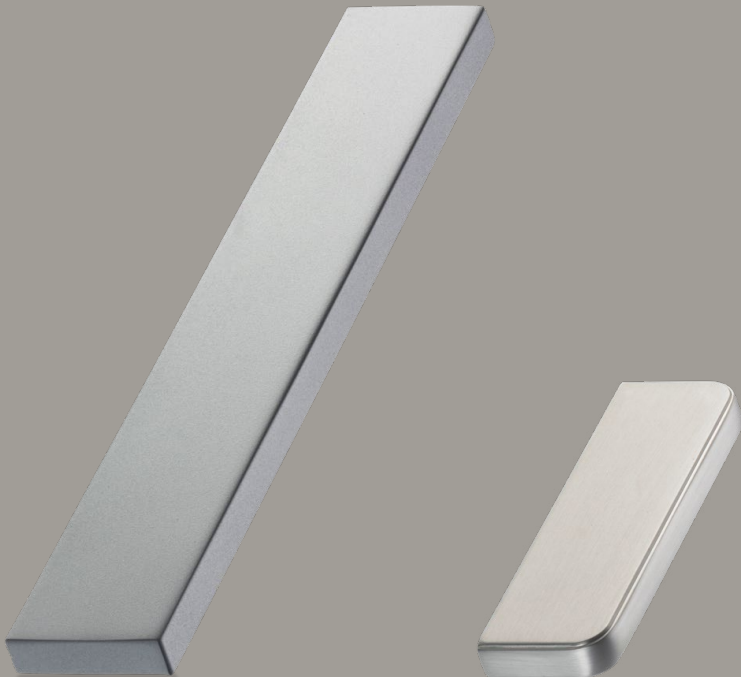
We can offer you first-class design and premium product quality at an amazingly low price.
How do we do this?

LEAN ORGANISATION

We're a small team with no needlessly large overheads, focused entirely on our core business: delivering your handles at the agreed time, in the defined quality, at the right place and in the required quantity. In everything we do, we promote and demand cost awareness, regardless of the sums involved.

TOP SUPPLIERS

We work with partners who have state-of-the-art factories with all the latest machinery. Robot-assisted production and fully automated processes mean we can deliver the best price-performance ratio and a consistently high level of quality.



P 0561
L x H x W
(X) x 9 x 27 mm
Hole spacing
customisable
Material surface
anodised, galvanised, coated



G 1484
L x H x W
40 x 8 x 22 mm
72 x 8 x 22 mm
Hole spacing
32 mm
64 mm
Material surface
galvanised, coated



K 3023
L x H x W
46 x 10 x 24 mm
Hole spacing
32 mm
Material surface
galvanised, coated



G 1458
L x H x W
(customisable) x 14 x 31 mm
Hole spacing
customisable
Material surface
galvanised, coated



G 1071
L x H x W
(customisable) x 8 x 30 mm
Hole spacing
customisable
Material surface
anodised, galvanised, coated



P 0628
L x H x W
(X) x 8 x 20 mm
Hole spacing
customisable
Material surface
anodised, galvanised, coated

**NO CATCH -
JUST HOOKS.**





K 3025

L x H x W
51 x 13 x 28 mm
Hole spacing
32 mm
Material surface
galvanised, coated



H 1604

L x H x W
40 x 8 x 40 mm
72 x 8 x 40 mm
Hole spacing
32 mm
Material surface
galvanised, coated



K 3026

L x H x W
69 x 12 x 42 mm
Hole spacing
32 mm
Material surface
galvanised, coated



K 3024

L x H x W
50 x 11 x 21,8 mm
Hole spacing
32 mm
Material surface
galvanised, coated



K 3028

L x H x W
50 x 10 x 36 mm
Hole spacing
32 mm
Material surface
galvanised, coated



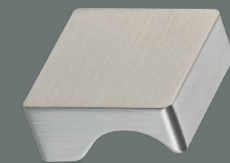
G 1482

L x H x W
52 x 27 x 18 mm
116 x 27 x 18 mm
Hole spacing
32 mm
Material surface
galvanised, coated



K 3027

L x H x W
60 x 45 x 22 mm
Material surface
galvanised, coated



G 1465

L x H x W
(customisable) x 8 x 30 mm
Hole spacing
customisable
Material surface
anodised, galvanised, coated



G 1374

L x H x W
(customisable) x 12 x 20 mm
Hole spacing
customisable
Material surface
anodised, galvanised, coated



G 1471

L x H x W
50 x 11 x 21,8 mm
82 x 11 x 21,8 mm
Hole spacing
32 mm
64 mm
Material surface
galvanised, coated



G 1481

L x H x W
52 x 18 x 26 mm
116 x 18 x 26 mm
Hole spacing
32 mm
Material surface
galvanised, coated

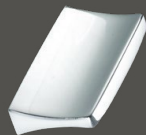
HANDLE, KNOB AND HOOK SETS

In the sets, the handle, knob and hook not only go together, but also look perfectly coordinated. Even the surface finish presents a unified look.



G 1383

L x H x W
192 x 10 x 30 mm
352 x 10 x 30 mm
Hole spacing
160 mm
320 mm
Material surface
galvanised, coated



K 3023

L x H x W
46 x 10 x 24 mm
Hole spacing
32 mm
Material surface
galvanised, coated



K 3024

L x H x W
50 x 11 x 21,8 mm
Hole spacing
32 mm
Material surface
galvanised, coated

Set A



G 1454

L x H x W
200 x 7,5 x 30 mm
328 x 7,5 x 30 mm
Hole spacing
160 mm + 192 mm
288 mm + 320 mm
Material surface
galvanised, coated



G 1484

L x H x W
40 x 8 x 22 mm
72 x 8 x 22 mm
Hole spacing
32 mm
64 mm
Material surface
galvanised, coated



H 1604

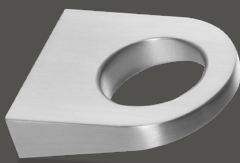
L x H x W
40 x 8 x 40 mm
72 x 8 x 40 mm
Hole spacing
32 mm
96 mm
Material surface
galvanised, coated

Set B



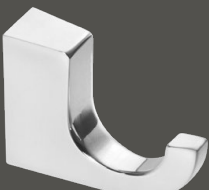
G 1540

L x H x W
188 x 10 x 38 mm
Hole spacing
160 mm
Material surface
galvanised, coated



K 3054

L x H x W
32 x 10 x 38 mm
Hole spacing
16 mm
Material surface
galvanised, coated



H 2116

L x H x W
32 x 10 x 38 mm
Hole spacing
16 mm
Material surface
galvanised, coated

Set C



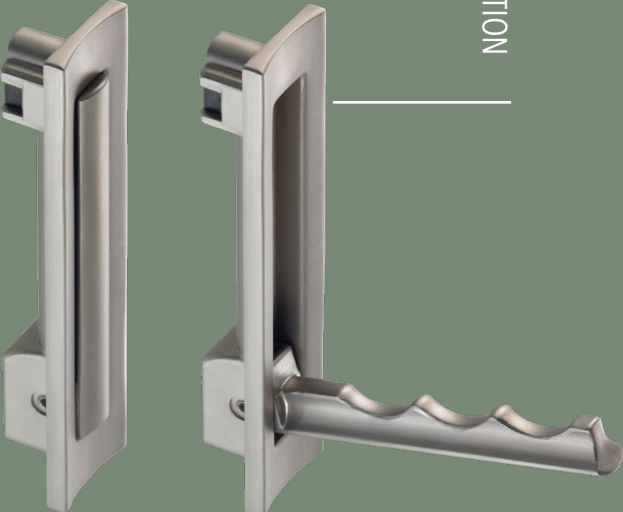
H 1432
L x H x W
72 x 16 x 18 mm
Hole spacing
32 mm
Material surface
galvanised, coated



H 1214
L x H x W
112 x 14 x 16 mm
Hole spacing
96 mm
Material surface
galvanised, coated



H 1216
L x H x W
120 x 24 x 16 mm
Hole spacing
96 mm
Material surface
galvanised, coated



H 1723
L x H x W
116 x 25 x 17 mm
Hole spacing
96 mm
Material surface
galvanised, coated

TOPSELLERS



F 4007

L x H

32 x 100 mm

Material surface

Plastic, galvanised, coated



F 4002

L x H

25 mm x customisable

Material surface

galvanised, coated

SURFACES

BEAUTIFUL SURFACES

We have a wide range of production facilities at our disposal with a great choice of different surfaces and materials.

// Only high-quality, durable and tried and tested metals are used, either in their natural state or with permanent colourings and coatings.

// Finishing process as required: anodised, galvanised, powder coated or wet painted.

// Fine-polished or roughly brushed for texture. Shiny or matt.

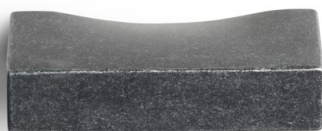
// Wide range of colours in the standard range.

// We also offer your individual coating colour (wet and powder coatings) from a minimum quantity of 1000 pieces. For example, the handle colour can be matched to other metal components of your product..

ALLOW US TO BRIEFLY INTRODUCE YOU TO OUR RANGE OF SURFACES:



L38 glossy black (coated)



G10 oxidised silver



G23 matt black nickel



L51 steel coloured (coated)



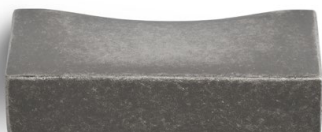
G19 brushed antique brass



G18 antique copper



L22 matt black (coated)



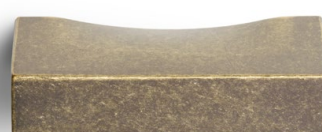
G12 antique tin



G14 brushed black nickel



G13 matt stainless-steel look



G11 antique brass



G21 brushed matt copper



L35 super matt black (coated)



G26 titanium coloured (gunmetal)



G09 glossy black nickel



G07 shiny stainless-steel look



G30 brushed matt brass



G29 Kupfer, matt gebürstet



P 37 matt black (powder-coated)



G20 antique black-brown



G06 matt nickel



E07 real brushed stainless steel



G27 matt brass



G02 shiny copper



P41 super matt black (powder-coated)



P 36 finely textured anthracite (powder-coated)



G08 matt chrome



E04 shiny polished stainless steel



G03 shiny brass



G28 brushed matt black



G04 shiny chrome

PRODUCT
AND
PROCESS
QUALITY

WHAT TURNS A HANDLE INTO A QUALITY PRODUCT?

TOP PROCESSING QUALITY

After casting, the „raw“ handles—or profiles—are properly deburred and polished, and the threads are drilled precisely. For a perfect finish and a uniform appearance, the handles are then finished in state-of-the-art coating and electroplating plants. These facilities ensure utmost fidelity when it comes to reproducing defined parameters such as colour value, gloss level and structure. Standardised quality monitoring at every stage of the production process and proper in-house transport guarantee perfect quality.

OUTSTANDING RESISTANCE

There are a whole host of physical and chemical factors that can affect parameters such as colour value, gloss level and structure of the surface during use. Our handles are characterised by their high resistance to these influences.



AND HOW DO WE ENSURE CONSISTENTLY HIGH-QUALITY PRODUCTS?



Every employee is aware of the importance of consistently high quality—details do matter and a “pretty good” definitely isn’t good enough. The defined quality parameters are constantly checked and monitored as part of quality assurance. Furthermore, all incoming goods are systematically checked in-house and full documentation is archived with no gaps. Visual checks are also performed in accordance with AQL 4.0, which includes traceable documentation. We enter into mutually binding partnerships with our suppliers and producers. This guarantees the consistently high-quality standards our name has represented for many years now. Audits of the production facilities are also carried out at regular intervals as part of quality assurance. These audits thoroughly check that processes, activities and results meet the defined requirements, norms or standards.



We continuously test resistance to factors that can alter parameters such as colour value, gloss level and surface structure in various test procedures—in our own test laboratory or externally at renowned institutes. For instance, the resistance is tested in terms of behaviour under chemical stress (acetone, detergents, beverages and food, acetic and citric acid, etc.), adhesion to coatings, exposure to direct sunlight, behaviour in the case of scratching and abrasion, saliva and perspiration stability and corrosion behaviour. We also carry out a REACH pollutant test in an independent testing institute, in which products including packaging are tested for polycyclic aromatic hydrocarbons (PAH).

RELIABLE AND EFFICIENT WORKFLOWS

We see ourselves as part of an efficient value-added chain. To be a reliable partner for you, we place particular importance on ensuring processes run smoothly. Part of this is our culture of ideas and improvement which encourages every employee to be a fellow thinker and pay attention to what could be done better in their own environment. Our aim is not to reinvent the wheel at every opportunity. It's not a matter of making sudden improvements, but rather of gradually perfecting a tried and tested process. We constantly exchange information about current projects and discuss ways to improve. As a result, numerous good ideas for process optimisation have already been developed. We will support you throughout the entire production process with efficient order processing as well as customised and flexible logistics solutions. In this way, we can ensure a reliable and on-schedule supply chain.



We constantly have our eye on stocks, consumption and ranges of coverage. Weekly updated overviews of the available stocks are made available for your requirement planning and cross-checking. If required, we offer the option of an EDI interface or a secure connection to individual systems.



In order to deliver the handles in the right quantity, carefully packed and to the right place at the right time, a well thought-out and meticulously planned logistics system is essential. Just-in-time or on the day of dispatch, our experienced team organises the on-schedule flow of millions of handles per year. If required, we pack the handles individually in the required quantities with their own barcode.



The large interim storage facility for finished goods in Bad Salzuflen with 2500 storage spaces guarantees both fast reaction times and supply reliability. Your products are stored there until they are called up as required and delivered by us. This not only saves you warehousing costs, but also reduces the logistical effort involved.

NEGISSES

A CREATIVE MIND IS BEHIND EVERY DESIGN:

WE WORK WITH OUTSTANDING DESIGNERS—FROM TALENTED NEWCOMERS TO ESTABLISHED DESIGN STUDIOS. BUT NOBODY CAN HOLD A CANDLE TO THOSE OLD HANDS. WITH THEIR IMMENSE EXPERIENCE, THEY KNOW EXACTLY WHAT'S IMPORTANT WHEN IT COMES TO DEVELOPING CONTEMPORARY PRODUCTS THAT SELL. THIS IS EXACTLY WHAT THE YOUNG DESIGNERS CHALLENGE TIME AND AGAIN, GENERALLY TAKING A COMPLETELY NEW APPROACH. THEY COME UP WITH DIFFERENT BUT, IN THE END, JUST AS SUCCESSFUL SOLUTIONS. AND YET, EVEN IF THEY SOMETIMES DO HAVE A COMPLETELY DIFFERENT APPROACH, THEY ALL SHARE THE SAME PASSION FOR BEAUTIFUL PRODUCTS WITH PERFECT WORKMANSHIP. THIS CREATIVE TEAM LOVES UNCONVENTIONAL IDEAS WITH THAT ELEMENT OF SURPRISE.

HAPPINESS IS IN YOUR HANDS

DESIGN PRINCIPLE

Our collection is very diverse, with a variety of designs and surfaces that appeal to a wide audience. For all these differences, three aspects are particularly important to us when designing and developing new products. In fact, we regard them as guiding principles for our designers.

Appearance: kitchens, bathrooms and furniture are not bought for one season, but to last for many years. In addition to high material quality, perfectly crafted products and flawless functionality, appearance plays a crucial role. Will you still like the furniture in a few years' time or will you soon get tired of it? The signature feature of our handles is unique timeless design that will retain its relevance and appeal for many years to come.

Feel: it's essential that the handle surfaces feel pleasant to the touch and that corners and edges in particular are beautifully finished and smooth. Impeccable deburring of the handle body is just as important for this as a perfect surface.

Ease-to-use: a handle must be easy to grip, fit perfectly in your hand and leave enough space for your fingers when opening and closing doors and drawers.

However passionate we are about our products, we must never lose sight of the price. The trick is to be able to offer you beautiful and functional handles at affordable prices.



THE CURATOR

TYPICAL
WEIßENBACH

COMFORTABLE

HARD
BUT
SOFT

FAST

EFFECTIVE

HARD
BUT
SOFT

These are the three core values we have identified in our company which we believe perfectly encapsulate what drives and defines us. Our guiding principle of "hard but soft" derived from these values isn't just a throwaway marketing phrase. We see it as a definitive guideline for our own actions and work, but also as a promise to all those who have dealings with our company.

So, what exactly are we saying with "hard but soft"? We supply hard metal products. Hard factors such as flawless product quality and reliable processes are also vitally important to us to ensure our long-term prospects on the market. Despite all our professionalism, we are ultimately very soft. Good relations with one another are particularly important to us. So, it's quite easy to assert and relatively quick to put in writing.

OUR PROMISE:

We don't just assert it. We do it.

WE KNOW WHAT WE'RE DOING.

EFFECTIVE

HARD
BUT
SOFT

We see ourselves as an efficient specialist supplier of handle solutions with high design standards. At the same time, we offer a top price-performance ratio and are part of an efficient value-added chain. We are committed to being a reliable partner in all phases of our collaboration with you, so that you can concentrate fully on your core business. Two things are particularly important in this respect: consistently high-quality products and streamlined processes.



FAST

WE'RE ON IT.**HARD
BUT
SOFT**

Our employees are trained co-thinkers and professionals in their field. So, you can expect nothing less than the highest level of solution orientation and active support.

We serve all customers—no matter the size—with the same commitment. Whatever your concern is, we will deal with it immediately, responding swiftly to your query or suggesting a solution to your problem.



Ulf Weißenbach



Sandra Weißenbach



Julia Stock



Kathrin Nagel



Jens Kressin



Björn Rozanski

COMFORTABLE

WE LIKE TO FEEL COMFORTABLE WITH EACH OTHER.

HARD
BUT
SOFT

We aim to make working with us as easy and pleasant as possible for you. We firmly believe that our customers do care about who supplies individual components, and that the term partnership actually means something. In a world that is becoming increasingly technocratic, cool and non-committal, a pleasant working relationship is important to us. That's why we treat our employees and business partners politely, with respect, listen, give honest opinions and keep our promises. The reason we can do all this so well is that we're not an anonymous dot-com company, but a family-run business working with people for people. We have established a congenial working environment where we feel comfortable—and where we can do our jobs with enthusiasm and conviction. And we have yet to say no to a friendly smile or a kind answer. We're sure that this is what makes the real difference.





Interested in seeing more beautiful designs and being the first to know about new products, events and promotions?

 [instagram.com/weissenbachgriffe](https://www.instagram.com/weissenbachgriffe)

1502
2502



weißbach

Weißbach GmbH & Co. KG

Bahnhofstraße 13
D-32105 Bad Salzuflen
T +49 5222 961003-0
F +49 5222 961003-9

kontakt@wb-tech.de

[instagram.com/weissenbachgriffe](https://www.instagram.com/weissenbachgriffe)